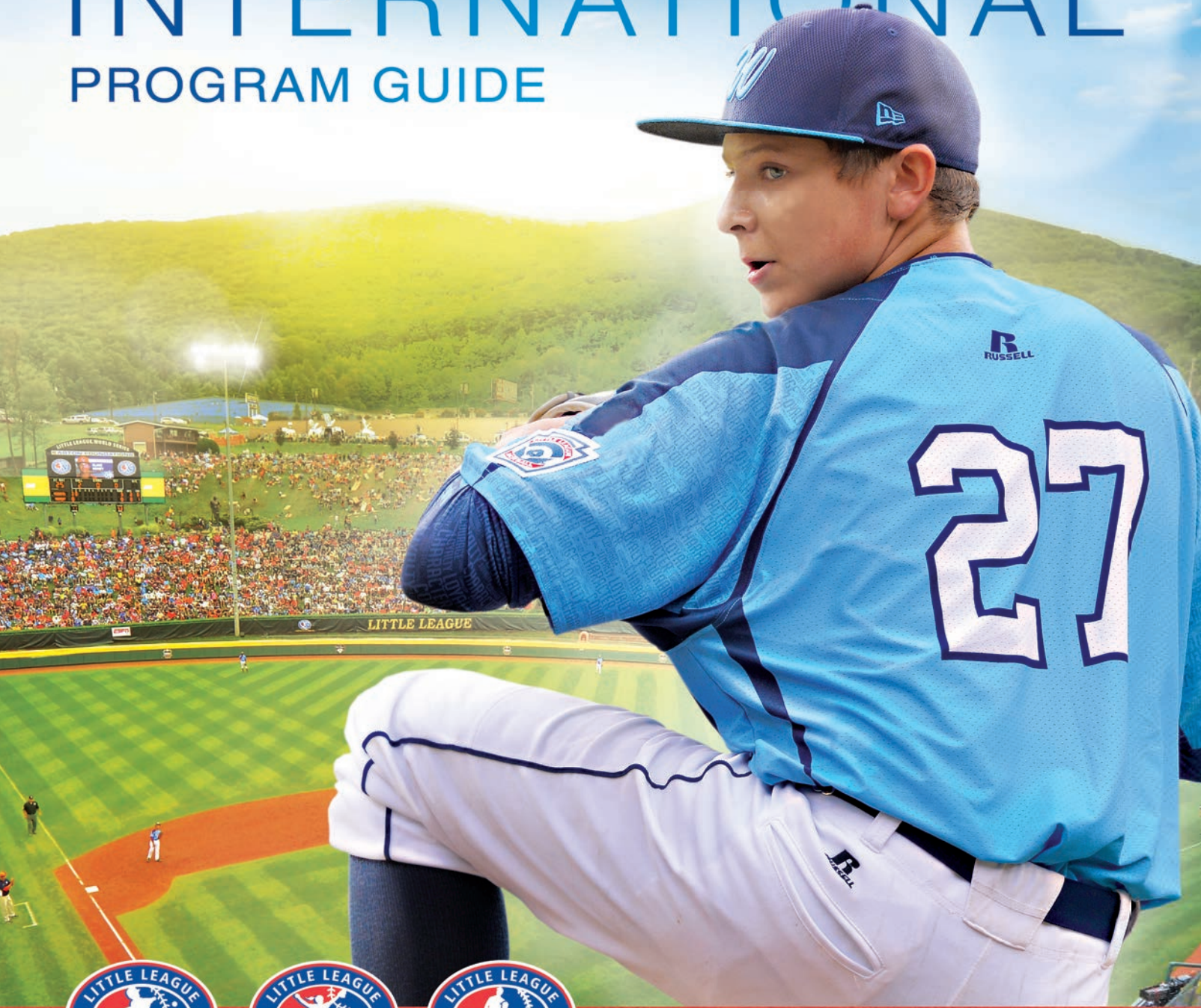


LITTLE LEAGUE® INTERNATIONAL PROGRAM GUIDE





TESTIMONIALS

LITTLE LEAGUE® INTERNATIONAL



“I liked the idea that I was playing for fun, because that’s what baseball should be at that age - fun. For me, Little League® was about having a good time, and I did.”

– **DEREK JETER**
Former New York Yankees Shortstop



“For all of the moms and dads who take special time out of their lives, I say thank you. You prioritize your family, and that’s crucial for a healthy world, to make sure our families remain strong. I equate Little League with good families.”

– **PRESIDENT GEORGE W. BUSH**

“Playing Little League molded me. I had so many good coaches in Little League. They taught me about sportsmanship, and Little League is where I really learned to compete.”

– **CHRIS DRURY**
1989 Little League Baseball® World Series
Champion; U.S. Olympian;
Former Captain of the NHL’s New York Rangers





MISSION OF LITTLE LEAGUE®

To provide a wholesome, healthy activity for children using the ball field as a classroom to instill discipline, teamwork, sportsmanship, and fair play.

WHY LITTLE LEAGUE?

Little League provides the framework, resources, and support used by over 7,000 communities around the world to provide a world class youth baseball and softball experience.

Offering baseball and softball programs for all players ages 4-16, the Little League framework allows organizations to offer a youth program that serves every child in the community. Little League's regular season brings friends and classmates together to enjoy an exciting baseball and softball experience in an environment focused on teaching the basics of teamwork, sportsmanship, and fair play. The Little League International Tournament provides additional opportunities for athletes interested in competing to earn a berth to one of nine World Series Tournaments. Additionally, the Little League Challenger Division® extends the benefits of Little League participation to individuals with physical and intellectual disabilities.

To help leagues take advantage of these opportunities, Little League provides every local program with a wide range of resources designed to enhance the Little League experience. From a Tee Ball program designed to give young athletes a great first experience with the game to training and clinics for coaches and umpires with all levels of experience to unmatched training and tools for league administrators, Little League has something to offer everyone.

Little League is more than an organization, it is a community of more than 7,000 baseball and softball programs in over 80 countries striving to provide a world class youth baseball and softball experience. Our goal is to provide unparalleled customer service and support to every organization.



History of Little League®



Little League® began in Williamsport, Pennsylvania, in 1938, when Carl Stotz, an oil clerk, agreed to a game of catch with his nephews who were too young to play organized baseball. Acting on a promise to find a way for children to play baseball like the Major Leaguers of the day, Mr. Stotz created a three-team league that would play on a field that was two-thirds the size of a standard baseball diamond. After being turned down by 56 local businesses, Mr. Stotz convinced a lumber

company, a dairy, and a pretzel maker to sponsor the teams for \$30 each. On June 6, 1939, the first Little League game was played in Williamsport.

For more than 75 years, Little League expanded around the globe and now offers opportunities to over 2.4 million boys and girls of all abilities in more than 80 countries worldwide.



1947

1939: The first Little League game is played in Williamsport, PA.

1947: The first Little League Baseball® World Series is played. Maynard Little League from Williamsport, Pa., wins the championship.



1957

1947: Allen "Sonny" Yearick, who played for Lycoming Dairy in 1939, becomes the first Little League graduate to play professional baseball.

1950: The first leagues outside the United States are formed at each end of the Panama Canal.

1957: Monterrey, Mexico becomes the first league outside of the U.S. to win the Little League Baseball World Series Championship



1974

1961: Senior League Baseball is introduced for players ages 13-15.

1974: The Little League Softball® program is introduced and Little League Baseball® rules are revised to include participation by girls.



2013

1989: The Little League Challenger Division® is introduced, providing opportunities for boys and girls with physical and intellectual disabilities the opportunity to enjoy the benefits of Little League participation.

1992: Lights are installed at Howard J. Lamade Stadium and the first night game is played at the Little League Baseball World Series.

2001: The Little League Baseball World Series expands from eight to sixteen teams.

2013: The Little League Intermediate (50/70) Baseball Division is introduced.

Today: Little League is the world's largest and most respected youth sports organization with more than 2.4 million participants playing in all 50 states and in more than 80 countries around the world.

The Little League® International Tournament

Beginning in late June with district tournaments around the world and culminating in late August with the Little League Baseball® World Series in Williamsport, Pa. the Little League International Tournament is the world's largest organized youth sports tournament. Thousands of communities participate annually, entering teams in some or all of the 11 available tournament trails (seven of which culminate in a World Series Championship) for baseball and softball players ages 9-16. With over 100 games, including 7 World Series Championships, televised on the ESPN family of networks, the Little League International Tournament is the world's most renowned youth sporting event.



BASEBALL

DIVISION	AGES	CHAMPIONSHIP	SITE LOCATION
8-9-10 Baseball	8-10	State Championship	Rotating
9-10-11 Baseball	9-11	State Championship	Rotating
Little League	10-12	World Championship	Williamsport, PA
Intermediate (50/70)	11-13	World Championship	Livermore, CA
Junior League	13-14	World Championship	Taylor, MI
Senior League	13-16	World Championship	Easley, SC

SOFTBALL

DIVISION	AGES	CHAMPIONSHIP	SITE LOCATION
8-9-10 Softball	8-10	State Championship	Rotating
9-10-11 Softball	9-11	State Championship	Rotating
Little League	10-12	World Championship	Portland, OR
Junior League	12 -14	World Championship	Kirkland, WA
Senior League	13-16	World Championship	Lower Sussex, DE

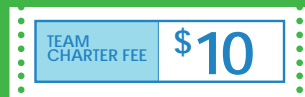
Tournament

ADMINISTRATIVE SUPPORT

TO KEEP YOUR ORGANIZATIONAL COSTS LOWS



TOURNAMENT TRAVEL REIMBURSEMENT



LOW CHARTER FEES



JOHN SMITH

1253 MEMORIAL AVE

DOB: XX | XX | XXXX

FREE BACKGROUND CHECKS FOR VOLUNTEERS

501(C)(3)

NON-PROFIT STATUS

FREE TOOLS AND RESOURCES

TO SUPPORT YOUR VOLUNTEERS



EXCLUSIVE ACCESS TO CLINICS AND SEMINARS



FREE ONLINE TRAINING FOR LEAGUE OFFICIALS, COACHES, UMPIRES



FREE PARENT COURSES FROM THE POSITIVE COACHING ALLIANCE (PCA)



FREE MARKETING RESOURCES TO DRIVE REGISTRATION



FREE RULEBOOKS

BASEBALL, SOFTBALL, CHALLENGER



NEWSLETTERS

FOR PARENTS, COACHES, LEAGUES OFFICIALS, AND MORE

THE LITTLE LEAGUE® BRAND

TO GIVE YOU INSTANT
RECOGNITION

OVER
100
TOURNAMENT GAMES TELEVISED



7



**WORLD SERIES
CHAMPIONSHIPS**

4

**STATE LEVEL
TOURNAMENTS**
FOR YOUNGER DIVISIONS



PLAYED IN OVER

80

COUNTRIES
AROUND THE WORLD

FLEXIBILITY TO STRUCTURE

YOUR LEAGUE TO BEST BENEFIT
YOUR COMMUNITY

FLEXIBILITY IN
STRUCTURING
DIVISIONS OF PLAY



**ABILITY TO IMPLEMENT
LOCAL LEAGUE OPTIONS**



OPTIONS IN STRUCTURING YOUR
BOARD AND ORGANIZATION

**MULTIPLE DRAFT
OPTIONS**

FOR TEAM SELECTION





FAST FACTS //

TEE BALL

AGES: 4-7

Base Path Length: 50' or 60'
Pitching Distance: N/A
Maximum Bat Diameter: 2 1/4"
Maximum Bat Length: 33"
Composite Bats: Only if on approved list
Lead-off Permitted: No
Stealing Permitted: No
Uncaught 3 rd Strike: No
Game Length: 1hr. Time Limit Recommended
Pitching Limits (per day): N/A
Tournament Offered: No



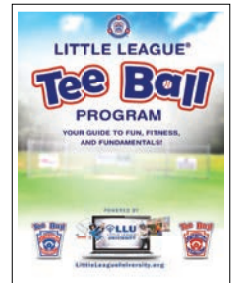
MINOR LEAGUE BASEBALL

AGES: 5-11

Base Path Length: 60'
Pitching Distance: 46'
Maximum Bat Diameter: 2 1/4"
Maximum Bat Length: 33"
Composite Bats: Only if on approved list
Lead-off Permitted: No
Stealing Permitted: Yes (local league may limit)
Uncaught 3 rd Strike: No
Game Length: 6 innings
Pitching Limits (per day): 7-8 Year Olds: 50 pitches; 9-10 Year Olds: 75 pitches; 11 Year Olds: 85 pitches
Tournament Offered: 8-10 and 9-11

Tee Ball

- Introductory level of play focused on teaching fundamentals in a fun, active environment
- 10-week, ready-to-play Curriculum provided free to all chartered leagues that includes practice plans and activities designed for 4-to-7-years-old
- Tee Ball focused registration and promotional materials available to assist with new player registration and parent education.



Minor League Baseball

- Instructional level of play that can incorporate Machine Pitch, Coach Pitch and Player Pitch to enhance player development
- 12-week Coach Pitch Curriculum provided free to all chartered leagues, and includes age appropriate practice plans and activities
- Leagues may subdivide the Minor Division into multiple levels of play (e.g. 7-8 Coach/Machine Pitch; 9-10 Player Pitch, etc.)
- League age 5-and 6-year-old players may participate provided they have one year of Little League Tee Ball experience



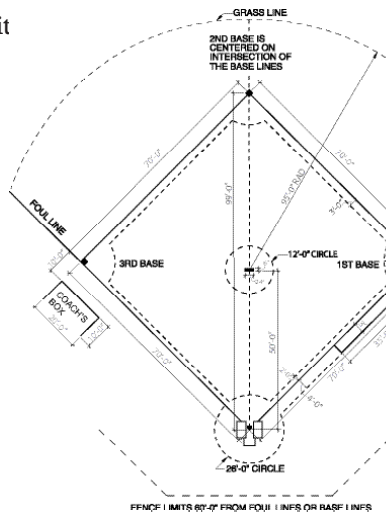
Little League® Major Baseball

- Leagues may choose to structure the Major Division for players 9-12, 10-12, or 11-12
- Players that wish to compete in the Little League Baseball (10-12) level of tournament must participate in the Major Division
- Players league age 11 and 12 may participate on both a Major Division and Intermediate (50/70) Division team simultaneously during the regular season



Intermediate (50/70) Baseball

- The newest division of Little League, introduced in 2013
- Provides an opportunity to help players transition from the Little League field to a full size diamond
- Leading off and stealing are permit
- Leagues may choose to structure this division for players ages 11-12, 11-13, 12-13, or 13 only
- Players who are league age 11 and 12 may participate on both a Major Division and Intermediate (50/70) Division team simultaneously
- Players who are league age 13 may participate on both an Intermediate (50/70) and Junior Division team simultaneously



FAST FACTS //

LITTLE LEAGUE® MAJOR BASEBALL

AGES: 9-12

Base Path Length:	60'
Pitching Distance:	46'
Maximum Bat Diameter:	2 1/4"
Maximum Bat Length:	33"
Composite Bats:	Only if on approved list
Lead-off Permitted:	No
Stealing Permitted:	Yes
Uncaught 3 rd Strike:	Yes
Game Length:	6 Innings
Pitching Limits (per day):	9-to-10 Year Olds: 75 Pitches; 11-to-12-year-olds: 85 Pitches
Tournament Offered:	8-10, 9-11 and Little League Baseball (10-12)



INTERMEDIATE (50/70) BASEBALL

AGES: 11-13

Base Path Length:	70'
Pitching Distance:	50'
Maximum Bat Diameter:	2 5/8"
Maximum Bat Length:	34"
Composite Bats:	BBCOR only
Lead-off Permitted:	Yes
Stealing Permitted:	Yes
Uncaught 3 rd Strike:	Yes
Game Length:	7 Innings
Pitching Limits (per day):	11-to-12-Year Olds: 85 pitches; 13-Year-Olds: 95 pitches
Tournament Offered:	Intermediate (50/70)



FAST FACTS //

JUNIOR LEAGUE BASEBALL

AGES: 13-14

Base Path Length: 80' or 90'
Pitching Distance: 54' or 60'6"
Maximum Bat Diameter: 2 5/8"
Maximum Bat Length: 34"
Composite Bats: BBCOR only
Lead-off Permitted: Yes
Stealing Permitted: Yes
Uncaught 3 RD Strike: Yes
Game Length: 7 Innings
Pitching Limits (per day): 12-Year-Olds: 85 Pitches; 13-to-14-Year-Olds: 95 Pitches
Tournament Offered: Junior Division (13-14) and Senior Division (13-16)



SENIOR LEAGUE BASEBALL

AGES: 13-16

Base Path Length: 90'
Pitching Distance: 60'6"
Maximum Bat Diameter: 2 5/8"
Maximum Bat Length: 36"
Composite Bats: BBCOR only
Lead-off Permitted: Yes
Stealing Permitted: Yes
Uncaught 3 RD Strike: Yes
Game Length: 7 Innings
Pitching Limits (per day): 13-16 Year Olds: 95 pitches
Tournament Offered: Junior (13-14), Senior (13-16) and Big League (15-18)

Junior League Baseball

- May be played on a 54/80 or 60/90 diamond
- Leagues may permit league age 12-year-olds to participate in the Junior Division
- Players may participate in the Junior or Senior Division tournament, provided they are age eligible and meet all other eligibility requirements
- Players may participate in up to two divisions of play for which they are age eligible



Senior League Baseball

- Played on a full size diamond (60/90)
- Leagues may choose to structure this division for players ages 13-16, 14-16, or 15-16
- Players may participate in the Junior, Senior, or Big League tournament provided they are age eligible and meet all other eligibility requirements
- Players may participate in up to two divisions of play for which they are age eligible
- which they are age eligible



Little League Challenger

- Provides an opportunity for boys and girls ages 4-18 (or up to age 22 if still attending school) with physical and intellectual challenges to enjoy the full benefits of participation in a Little League program
- Non-competitive “adaptive baseball” program
- A combination of Tee Ball and Coach Pitch may be used
- Buddies may be used to assist Challenger participants in the areas of batting, base running, and fielding
- Flexible rules and guidelines allow the game to be adapted to meet the needs of individual player



FAST FACTS //

LITTLE LEAGUE CHALLENGER

AGES: 4-18 (UP TO 22 IF STILL IN SCHOOL)

Base Path Length: 60'
Pitching Distance: 46'
Maximum Bat Diameter: 2 ¼"
Maximum Bat Length: 33"
Composite Bats: Only if on approved list
Lead-off Permitted: No
Stealing Permitted: No
Uncaught 3rd Strike: No
Game Length: Local Option
Pitching Limits (per day): Player pitch not recommended
Tournament Offered: Over 20 non-competitive Jamborees offered



Senior League Challenger

- Provides an opportunity for individuals ages 15 and above (no maximum age) with physical and intellectual challenges to enjoy the full benefits of participation in a Little League program
- Non-competitive “adaptive baseball” program
- A combination of Tee Ball and Coach Pitch may be used
- Buddies may be used to assist Challenger participants in the areas of batting, base running, and fielding
- Flexible rules and guidelines allow the game to be adapted to meet the needs of individual players

SENIOR LEAGUE CHALLENGER

AGES: 15 AND UP (NO MAXIMUM AGE)

Base Path Length: 90'
Pitching Distance: 60'6"
Maximum Bat Diameter: 2 5/8"
Maximum Bat Length: 36"
Composite Bats: BBCOR or on approved list
Lead-off Permitted: No
Stealing Permitted: No
Uncaught 3 rd Strike: No
Game Length: Local Option
Pitching Limits (per day): Player pitch not recommended
Tournament Offered: Over 20 non-competitive Jamborees offered



FAST FACTS //

TEE BALL

AGES: 4-7

Base Path Length: 50' or 60'
Pitching Distance: N/A
Ball Size: 10" or 11"
Maximum Bat Diameter: 2 ¼"
Maximum Bat Length: 33"
Stealing Permitted: No
Game Length: 1 hr. Time Limit Recommended
Pitching Limits (per day): N/A
Tournament Offered: No
Uncaught 3 RD Strike: No



MINOR LEAGUE SOFTBALL

AGES: 5-11

Base Path Length: 60'
Pitching Distance: 35'
Ball Size: 10" or 11"
Maximum Bat Diameter: 2 ¼"
Maximum Bat Length: 33"
Stealing Permitted: Yes (when ball reaches batter; local league may limit)
Game Length: 6 innings
Pitching Limits (per day): 12 innings
Tournament Offered: 8-10 and 9-11
Uncaught 3 RD strike: No

Tee Ball

- Introductory level of play focused on teaching fundamentals in a fun, active environment
- 10-week ready-to-play curriculum provided free to all chartered leagues that includes practice plans and activities designed for 4 to 7-year-olds
- Tee Ball focused registration/promotional materials available to assist with new player registration

Minor League Softball

- Instructional level of play that can incorporate Machine Pitch, Coach Pitch, and Player Pitch to enhance player development
- Leagues subdivide the Minor Division into multiple levels of play (e.g. 7-8 Coach/Machine Pitch; 9-10 Player Pitch, etc.)
- League age 5-and 6-year-old players may participate provided they have one year of Little League Tee Ball experience



Little League® Major Softball

- Leagues may choose to structure the Major Division for players 9-12, 10-12, or 11-12
- Players that wish to compete in the Little League Softball (11-12) level of tournament must participate in the Major Division
- Players league age 12 may participate on both a Major Division and Junior Division team simultaneously



Junior League Softball

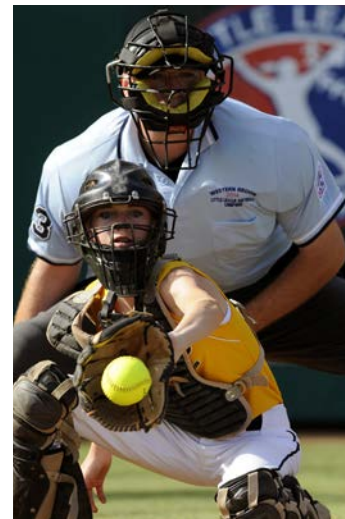
- Players may participate in the Junior, Senior, or Big League Division tournament provided they are age eligible and meet all other eligibility requirements
- Rules closely align with National Federation of State High School Association (NFHS) rules
- Players may participate in up to two divisions of play for which they are age eligible

FAST FACTS //

LITTLE LEAGUE® MAJOR SOFTBALL

AGES: 9-12

Base Path Length: 60'
Pitching Distance: 40'
Ball Size: 12"
Maximum Bat Diameter: 2 ¼"
Maximum Bat Length: 33"
Stealing Permitted: Yes (at the release)
Game Length: 6 innings
Pitching Limits (per day): 12 innings
Tournament Offered: 8-10, 9-11
Little League Softball (10-12)
Uncaught 3 RD Strike: Yes



JUNIOR LEAGUE SOFTBALL

AGES: 12-14

Base Path Length: 60'
Pitching Distance: 43'
Ball Size: 12"
Maximum Bat Diameter: 2 ¼"
Maximum Bat Length: 34"
Stealing Permitted: Yes (at the release)
Game Length: 7 innings
Pitching Limits (per day): No restrictions
Tournament Offered: Junior League (12-14), Senior League (13-16), and Big League (14-18)
Uncaught 3 RD Strike: Yes



FAST FACTS //

SENIOR LEAGUE SOFTBALL

AGES: 13-16

Base Path Length: 60'
Pitching Distance: 43'
Ball Size: 12"
Maximum Bat Diameter: 2 ¼"
Maximum Bat Length: 34"
Stealing Permitted: Yes (at the release)
Game Length: 7 innings
Pitching Limits (per day): No Restrictions
Tournament Offered: Junior League (12-14), Senior League (13-16), and Big League (14-18)
Uncaught 3 rd strike: Yes



Senior League Softball

- May be operated by a local league or as a district-wide program
- Leagues have flexibility to structure this division for players 13-16, 14-16, or 15-16
- Players may participate in the Junior, Senior or Big League Division tournament provided they are age eligible and meet all other eligibility requirements
- Rules align closely with NFHS rules
- Players may participate in up to two divisions of play for which they are age eligible



Little League® Grow the Game Grant Program

Introduced in 2015, Little League's Grow the Game Grant Program provides assistance to chartered Little League programs working to further the mission of Little League in their community.



Grants of up to \$20,000
are available for the following areas of focus:

- League Enhancement
- Challenger Program Enhancement/Development
- Softball Enhancement/Development
- Little League Urban Initiative



Child Protection Program

Established in 1998, Little League's Child Protection Program aims to educate local volunteers on ways they can help ensure the safety of children in their league. Since 2003, Little League has required leagues to conduct background checks on managers, coaches, and all other volunteers that have regular and repetitive access to the children in the league. Little League provides each local league with 125 free background checks annually and an unlimited number of checks at a nominal fee.



Little League® Urban Initiative

Since 1999, The Little League Urban Initiative has worked to provide access to the benefits of the Little League program to boys and girls within urban communities where safety, security, and comfort are not common realities for children. The program's goal is to identify and then create or renew baseball and softball programs in these communities bringing the values of teamwork, fair play, respect for authority and the desire to excel to the children's lives.

There are three main categories
of assistance available to leagues enrolled in this program:

- Equipment Acquisition
- Training and Education



FIELD CENTERS

LITTLE LEAGUE® INTERNATIONAL

REGIONAL HEADQUARTERS

WEST

San Bernardino, CA
909-887-6444

westregion@LittleLeague.org

SOUTHWEST

Waco, TX
254-756-1816

southwestregion@LittleLeague.org

SOUTHEAST

Warner Robins, GA
478-987-7227

southeastregion@LittleLeague.org

CENTRAL

Indianapolis, IN
317-897-6127

centralregion@LittleLeague.org

EAST

Bristol, CT
860-585-4730

eastregion@LittleLeague.org

LITTLE LEAGUE®
INTERNATIONAL

LOCATED IN SOUTH WILLIAMSPORT, PA
Responsible for International Operations
of Little League

REGIONAL
HEADQUARTERS

5 REGIONAL HEADQUARTERS IN THE U.S.
in addition to offices in Canada, Hong Kong, Poland,
and Puerto Rico, Provide support to leagues
and district administrators.

D.A. FAST FACTS //

650 D.A.'s Worldwide

Elected every four years by each league.

DISTRICT
ADMINISTRATORS

VOLUNTEERS WHO OVERSEE LEAGUES
and act as a liaison between leagues and the
regional office.

LEAGUE FACTS //

7,000 Leagues

1,000,000 + Volunteers

Over 150,000 Teams

LOCAL, VOLUNTEER-RUN
baseball and softball programs that
choose to affiliate with Little League

LOCAL
LEAGUES

VOLUNTEERS

PLAYERS

PARENTS

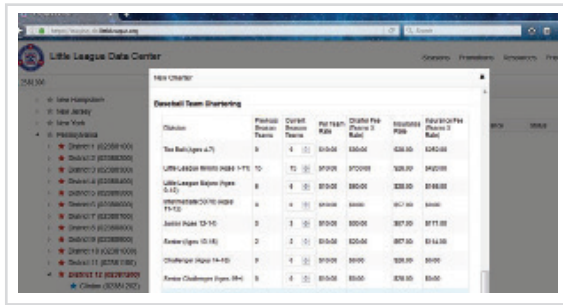
Chartering with Little League®

For the first time is a quick and easy 3-step process that is often completed in less than two weeks. To request a charter packet visit LittleLeague.org/affiliate or contact Little League International at (570) 326-1921.

3 STEPS TO CHARTERING WITH LITTLE LEAGUE FOR THE FIRST TIME:

1. COMPLETE AND SUBMIT A CHARTER APPLICATION

The Little League Charter Application and Insurance Enrollment Form is where you will indicate how many teams your league will charter in each division, as well as whether or not you will elect to purchase insurance through the AIG group insurance program offered to all chartered Little Leagues.



To complete and submit a charter application, visit LittleLeague.org/newleagueapp

2. SUBMIT A LEAGUE CONSTITUTION AND LIST OF BOARD MEMBERS

Each affiliated Little League program must submit a copy of their league's constitution. A constitution is the legal document that governs the operation of your Little League program. We strongly encourage all leagues to adopt the Little League Model Constitution available at LittleLeague.org/constitution; however, if you have an existing constitution you may submit that as well. Along with your league's constitution, please submit a list of current board members for our records.

Once completed, please submit a copy of your constitution and list of board members to Little League International and your respective regional office.



3. SUBMIT A BOUNDARY MAP

All Little League programs must file a boundary map of the area which they will service as well as a written description of that area. The map must be signed by both the league president and the volunteer Little League District Administrator for that league. For your local district administrator's name and contact information, please contact Little League International or your regional office.

Once completed, send a copy of your signed boundary map and written description to your respective regional office.

FREQUENTLY ASKED QUESTIONS

HOW MUCH DOES IT COST TO JOIN LITTLE LEAGUE®?

The cost of affiliating with Little League is \$10 per team for all divisions of baseball and softball. All leagues must also carry accident and general liability insurance.

WHAT IS THE DEADLINE FOR SUBMITTING A CHARTER APPLICATION?

Leagues should submit their charter application prior to beginning of their regular season. The deadline to submit a charter application is typically the first week of June.

HOW LONG DOES IT TAKE FOR MY LEAGUE'S CHARTER APPLICATION TO BE APPROVED?

Once the charter application, constitution and boundary map are submitted, most applications are approved within two weeks.

WHAT AMOUNT SHOULD I PLACE IN BOX G ON THE CHARTER APPLICATION (GENERAL LIABILITY INSURANCE)?

Your league's general liability insurance rate will be based on the number of teams in your league. To receive a quote, contact Little League's Risk Management Department at (570) 326-1921 option #4.

WILL MY LEAGUE RECEIVE RULEBOOKS?

Each league receives one Rulebook free of charge for each team chartered. Rulebooks will be sent after your league's charter is processed.

WHEN CAN MY LEAGUE REGISTER TO PARTICIPATE IN THE LITTLE LEAGUE® INTERNATIONAL TOURNAMENT?

Tournament enrollment typically begins online in mid-April online through the Little League Data Center.

HOW MUCH DOES IT COST TO COMPETE IN THE LITTLE LEAGUE® INTERNATIONAL TOURNAMENT?

The tournament entry fee is \$200 per team. This is paid prior to entering the district tournament and covers all tournament participation through the World Series level of play. Leagues will be reimbursed for tournament travel at a rate of \$1 per mile for one round trip to the tournament site (minimum 150 miles) at the section level and beyond.

USEFUL LINKS

LittleLeague.org : Little League® Homepage

LittleLeague.org/newleagueapp : Submit a Charter Application

LittleLeagueSoftball.org : Information on Little League Softball®

LittleLeagueChallenger.org : Information on the Little League Challenger Program

LittleLeagueU.org : A learning platform for all of our volunteers and parents to get educational resources

LLBWS.org : Information on the World Series, times, schedules and scores.

LittleLeague.org/affiliate : Request a charter application

LittleLeague.org/newleague : Information on affiliating with Little League

LittleLeague.org/constitution : Download a copy of the Little League model constitution

LittleLeague.org/datacenter : Online league administration tools for your league



“My participation in Little League® opened doors for me, and showed me that there were other opportunities in life that I could have with hard work and perseverance.”

– TORII HUNTER
MLB Player

“I was the player that wasn’t the biggest, fastest or smartest, but I still learned through Little League® that I have no limits.”

– SUE ENQUIST
NCAA Softball Champion player and coach, UCLA



“The hours you put into Little League® help to develop a sense of commitment and dedication for whatever you do. It’s like when you invest, you don’t know until later if it was a good deal or not. For me, the lessons I learned in Little League were a good investment and set the foundation for the rest of my life.”

– DUSTY BAKER
Former MLB Manager and Player

LITTLE LEAGUE® PLEDGE

I TRUST IN GOD
I LOVE MY COUNTRY
AND WILL RESPECT ITS LAWS
I WILL PLAY FAIR



AND STRIVE TO WIN
BUT WIN OR LOSE
I WILL ALWAYS DO MY BEST

LITTLE LEAGUE® INTERNATIONAL BASEBALL AND SOFTBALL

539 U.S. Highway 15 • P.O. Box 3485 • Williamsport, PA 17701-0485
Phone: 570-326-1921 • Fax: 570-326-1074



twitter.com/LittleLeague



facebook.com/LittleLeague



instagram.com/LittleLeague



youtube.com/LittleLeague